





-  Imagine
-  Create
-  Design
-  Model & Simulate

R.E.D.S for modeling & simulation of renewable desalination systems

-  To take up research projects in the area of the renewable energy.
-  To help new industries that caters to the market of the renewable energy.

R.E.D.S Library
6 Jalan Usahwan
Setapak, Kuala Lumpur
Malaysia



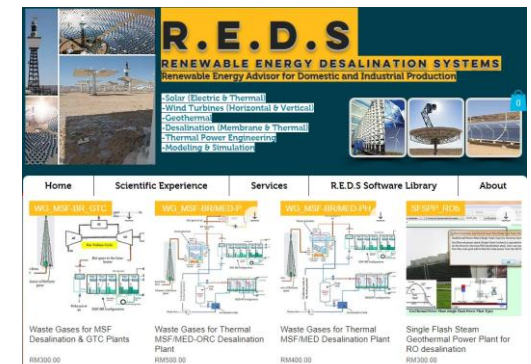
<https://mohammedeldeen.wixsite.com/reds>
msherafeldin@gmail.com

00601139795943
Kuala Lumpur, Malaysia

R.E.D.S Library

Renewable Energy Desalination Systems

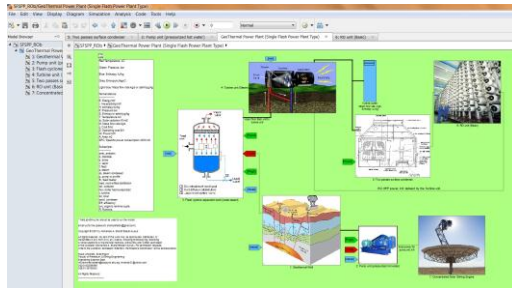
<https://mohammedeldeen.wixsite.com/reds>



What Is R.E.D.S?

The **R.E.D.S** is a visual software approach that leads you to model & simulate renewable desalination systems. Friendly interface is created & customized by the use of “User defined function block” block. **REDS** contain three main parts:

- (1) **SDS: Solar Desalination Systems**
- (2) **WDS: Wind Desalination Systems**
- (3) **GDS: Geothermal Desalination Systems**



Find out **GDS** library for modeling & simulation of **Geothermal Desalination Systems**. Download our example single flash steam power plant for electric power production and **RO** desalination process. User has the ability to reform the model.

Copyright © 2007

msharafeldin@gmail.com
+601139795943

<https://mohammedeldeen.wixsite.com/reds>

https://www.researchgate.net/profile/Mohamed-Sharaf_Eldean

WDS is wind power to drive on the desalination plants. **RO** and **MD** can be operated via **WDS** concept. **HWT & VWT** are modeled and simulated for such purposes. Design model is performed where user can easily calculate the design aspects such as height, rotor diameter, rotor speed and so on. **WDS** is available at our web site.



MatLab-SimuLink Environment

MatLab-SimuLink interface is essential for the models run. User has to purchase and install the MatLab-SimuLink in order to run the REDS smoothly. The MatLab interface is considered a powerful tool box for the modeling package. Solar systems, wind, geothermal, and desalination plants (membrane & thermal) are constructed by the aid of MatLab-SimuLink tool box.

Download Your Favorite Model

“You can easily download your model with an ease of reforming it based on your imagination”

Check our latest prices at:

<https://mohammedeldeen.wixsite.com/reds/shop>

“Send us your renewable energy project hence, we will create it for you”

Check our latest prices at:

<https://mohammedeldeen.wixsite.com/reds/contact>

Our Services

- Modeling & Simulation
- Scientific Projects
- Operation Research

Scientific Projects

- POWERSOL project-FP6, EU
- MATS project-FP7, EU
- RDI project-STDF & EU, Egypt
- POWERSUN project, STDF, Egypt